

Connecting a personal device to the Centenary SHS network

Disclaimer: All screenshots are taken from a Windows device. While the exact screens may differ depending on your device, the general process remains the same.

Please note: Android devices will need to download the 'Cisco Network Setup Assistant' app from the Google Play Store, at home, BEFORE starting this process.

1. At school, connect to the 'DETE-Guest' wireless network.



Figure 1: Wireless Connection dialogue on a Windows device

2. Open a browser and attempt to navigate to any site (e.g. <http://news.com.au>).
3. Whichever site you try to connect to, you will be redirected to a BYOx login page.
4. In the 'Username' field, enter "MTN\<username>", so if your username is e.g. mmack38, type in "MTN\mmack38". Enter your school password, agree to the terms and conditions and click 'Sign On'.

A screenshot of a web-based login page. It has two input fields: 'Username:' and 'Password:'. Below the password field is a scrollable area containing terms and conditions. The text in the scrollable area includes: 'The Department of Education, Training and Employment's computer network and information, Communication and Technology (ICT) facilities are available only for approved users for approved purposes. Different users are allowed different types of access. When using the network and facilities you must act at all times lawfully and in line with the rules that apply to you. E.g for staff – the Code of Conduct E.g for students – the Code of School Behaviour Unauthorised use may result in disciplinary action being taken against you. If the Department reasonably suspects you are using the network and facilities in a manner that constitutes a crime, the Department will refer the matter to the police. Your use of the network, including your use of the Internet and email is monitored by Information and Technologies Branch and any wrongdoing can be traced. Information you enter, access and store in the Department's network can be'. Below the scrollable area is a checkbox labeled 'I agree to the terms and conditions' which is checked, and a 'Sign On' button.

Figure 2: Guest Portal Login Page

- On the next screen, click 'Start' to proceed.
- Enter a name and description to identify the device (e.g. Billy's Dell Laptop) and proceed to the next step.

Note: Students are permitted to have up to 3 devices connected. When attempting to add a 4th device, a list of your currently connected devices will be shown so you may choose which device to remove.

- A program called "Cisco Network Setup Assistant" will be downloaded onto your computer. Running this program will load the necessary security settings.

Note: Due to security restrictions on the DETE-Guest network, the Google Play Store is not able to be accessed. For this reason, please download the 'Cisco Network Setup Assistant' app at home before beginning this process.



Figure 3: Cisco Network Setup Assistant

- Several screens similar to the screens below may appear. Click 'Yes' on any windows that appear.

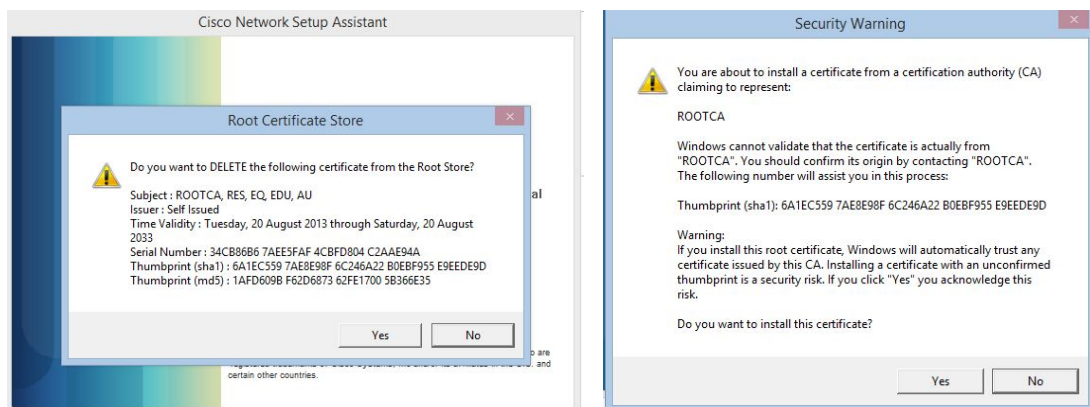


Figure 4: Certificate Warning Screens

9. Click 'Exit'.



Figure 5: Successful completion of Network setup

10. Check that you are connected to the 'DETE-BYOx' network. If not, 'forget' the 'DETE-Guest' network and manually connect.

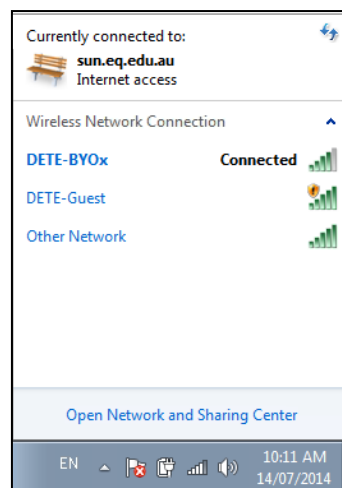


Figure 6: Connected to DETE-BYOx

11. To access the Common Drive and your student Home Drive, you will need to download and run the BYOx application from the School's Website (<https://centenaryshs.eq.edu.au/Cocurricular/Computerandinternet/Pages/Connecting-a-personal-device-to-the-Centenary-SHS-network.aspx>). Alternatively, you can also navigate to the school home page -> Co-curricular -> Computer and internet -> Connecting a personal device to the Centenary SHS network.

Simply click on the appropriate link in the right hand side "Instructions" column, and save the downloaded file somewhere easily accessible. At school, run the application, enter your school username and password and click 'Connect'. At home, simply click the 'Disconnect' button to remove these drives.

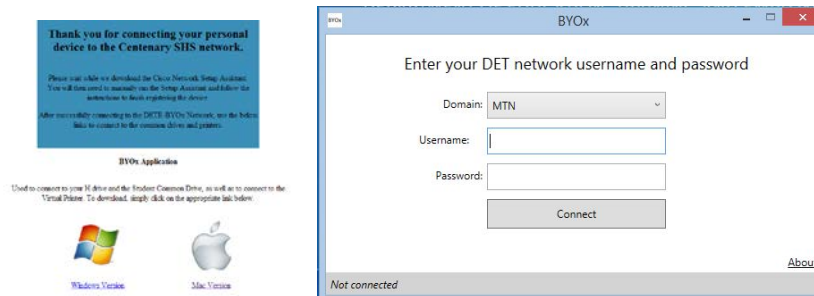


Figure 7: Success screen and BYOx Application

12. To print, you will need to install "Papercut" which is also available on this page. When at school, run the BYOx application to add the printer. Simply run the downloaded file, follow the prompts to install, enter your school username and password, and you will see your current printing balance displayed. You will then be able to print to the 'Virtual Printer' and collect your jobs after swiping your ID card on the printers available in the Resource Centre or in the Business Block hallway.

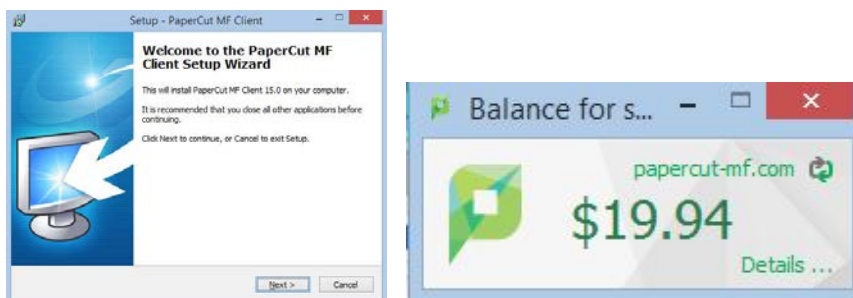


Figure 8: Papercut Installation and Sample Balance Window